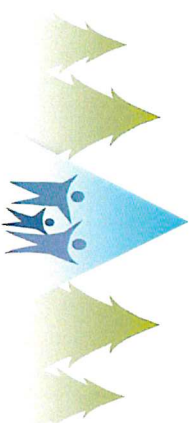


COVID-19 Update
August 11, 2020



Northeast Tri County
HEALTH DISTRICT

Washington State

7 Day 14 Day

Rate of newly diagnosed cases per 100K people

— Case rate — Latest case rate — Case rate (incomplete data) - - - Goal (<25 case rate)

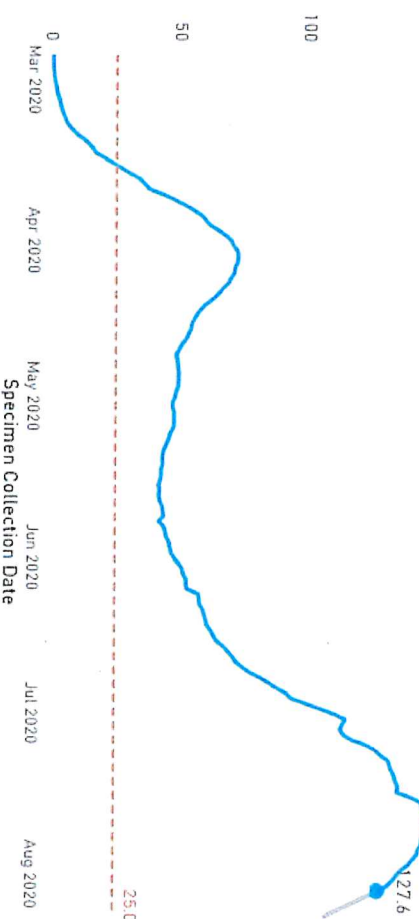
Rate per 100K of newly diagnosed cases during the prior two weeks **127.6**

Meeting goal of fewer than 25 cases per 100,000 people **No**

Supporting detail

Population **7.55M**

Confirmed cases in the prior two weeks **9,631**



Sources: Washington State Department of Health and the Washington State Office of Financial Management

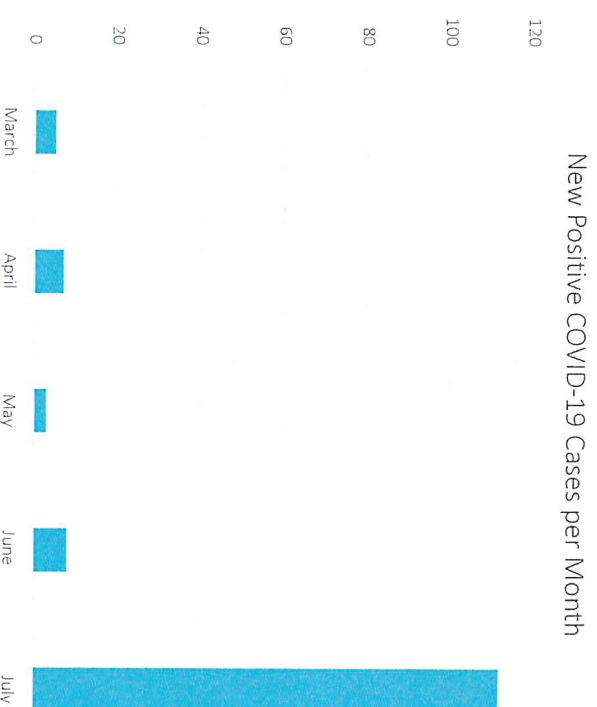
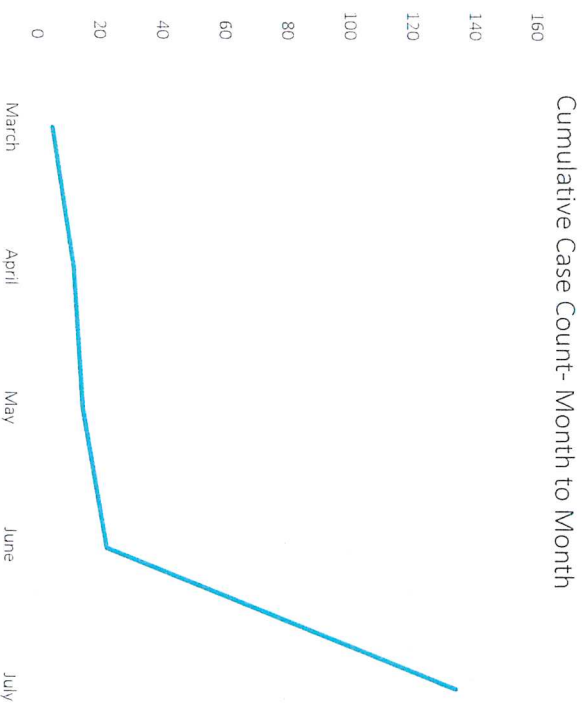
Statewide cases per 100K (for reporting period July 22 through Aug 4)

WA Forecast for COVID-19- from SitRep 11 issued on August 7st

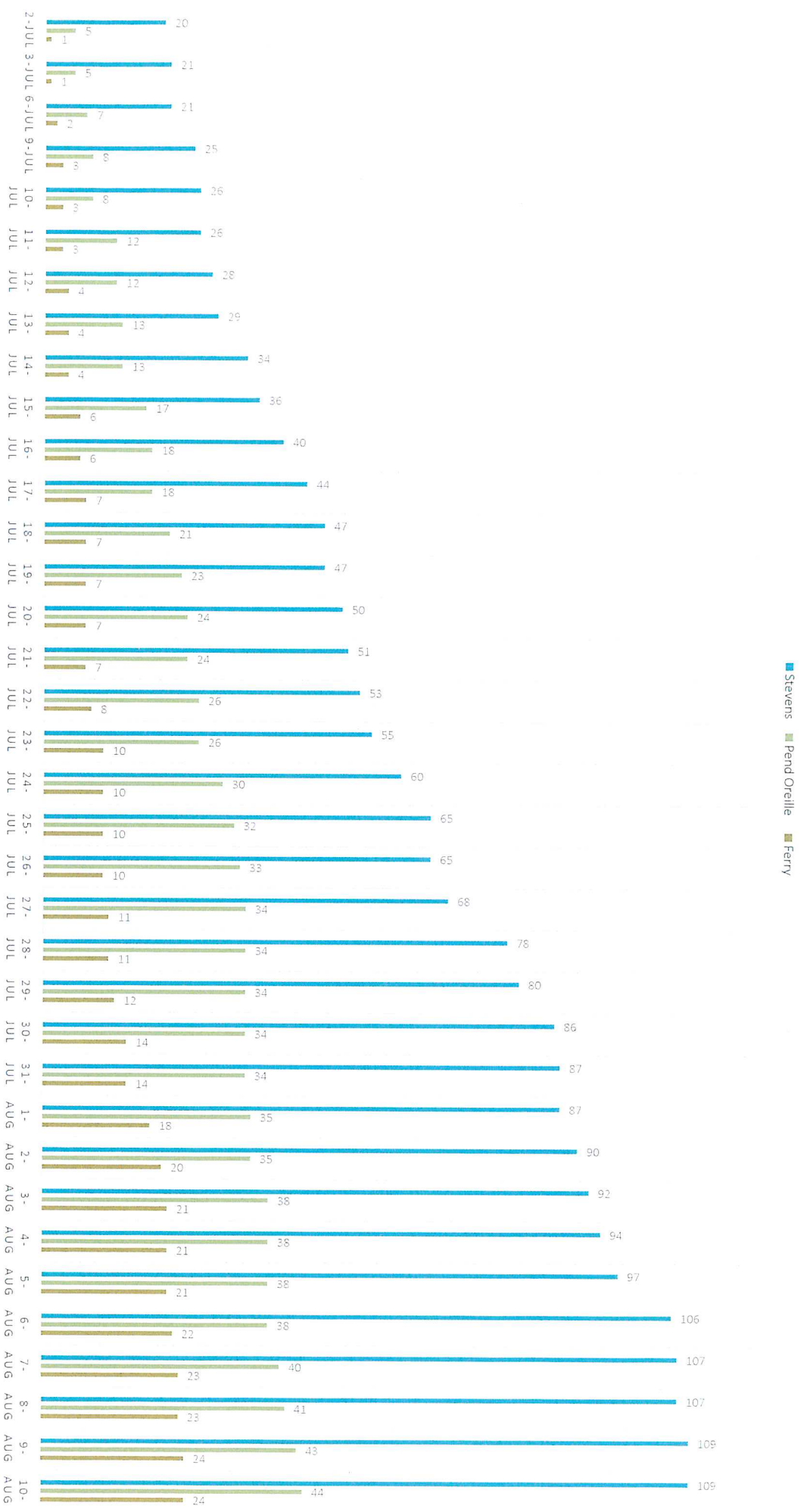
The slight deceleration in the growth of new cases is an improvement over the rate of increase noted in our last few reports. However, it is too early to know with certainty whether this represents a real turnaround. Further, the observation at the state level that cases continue to increase in the older age groups and particularly in those 70 and older is concerning. We expect that if the increase in cases in these older age groups continues unabated this will result in an increase in hospitalization and deaths.

The decline in *Re* correlates with the statewide order to wear masks followed by a no-mask, no-service announcement and restrictions pausing the Safe Start program. We cannot definitively attribute this trend to the mask mandates because mask wearing is generally accompanied by heightened awareness and physical distancing, but a preponderance of evidence indicates that widespread use of masks significantly reduces transmission. Strict adherence to masking and physical distancing policies and limits on social contacts remain necessary to further suppress COVID-19 transmission in Washington state and protect groups at higher risk for severe disease.

Tri County Area Trends



CUMULATIVE POSITIVE COVID-19 CASES BY COUNTY



County of Residence	Confirmed Positive Cases	New Cases as of: 8/10	New Cases in Last 14 Days	Negative Tests	Currently Hospitalized	Deaths
Ferry	24	0	13	536	0	0
Pend Oreille	44	1	10	1109	3	0
Stevens	109	0	43	2859	5	1
Total	177	1	66	4504	8	1

As of August 5th, cases per 100,000 in last two weeks

- Ferry (pop 7,780) = 167
- Pend Oreille (pop 13,350)= 75
- Stevens (pop 45,030)= 95

Using same unit of measurement, in comparison.... (July 22-Aug 4)

- Spokane Co = 214
- Lincoln Co= 119
- Adams Co= 372
- Okanogan Co= 569
- King Co= 85
- Whitman= 60
- Statewide Ave= 127

Reopening Schools

- ✓ Will be locally driven—unlikely there will be statewide determination
- ✓ Revised DOH K-12 Guidance. Included decision tree on reopening and reference coordination with local health officer.
- ✓ Conditions for reopening for in person instruction should include:
 - downward trend
 - low rates of COVID-19 of less than 25 new cases/per 100 K
 - readiness in other key areas (medical, public health, school ready with safety/health plan)
 - cautious approach

Decision Tree for Provision of In Person Learning among Public and Private K-12 Students during COVID-19

Should your community provide in person learning and for whom?

For School Administrators, Local Health Officers, and Community Stakeholders

The risk of COVID-19 being introduced into the school depends on the level of COVID-19 spread in the community and the health and safety measures taken by schools. Consider the following educational modalities based on community transmission and other health and education risks and benefits.

COVID-19 Activity Level

Education Modality*

Extracurricular

HIGH >75 cases/100K/14 days

Strongly recommend distance learning with the option for limited in-person learning in small groups, or cohorts, of students for the highest need students, such as students with disabilities, students living homeless, those farthest from educational justice, and younger learners.

Strongly recommend canceling or postponing all in-person extra-curricular activities, including sports, performances, clubs, events, etc.

Protect staff and students at higher risk for severe COVID-19 while ensuring access to learning

Other considerations:

- Increasing trend in cases or hospitalizations
- Test positivity >5%
- Other health and education risks and benefits to children and their families

When any in-person

- Transport or facilitate drop-off and pick-up of students
- Group students (required in elementary, recommended for middle and high school)
- Practice physical distancing of 26 feet among students and staff.
- Promote frequent hand washing or sanitizing
- Promote and ensure face covering use among students and staff
- Increase cleaning and disinfection
- Improve ventilation

MODERATE 25-75 cases/100K/14 days

Recommend distance learning as described above. In addition, consider expanding in person learning to elementary students.

Strongly recommend canceling or postponing all in-person extra-curricular activities.

When all YES

- Does the school have letters drafted to inform families and staff about confirmed cases or outbreaks?
- Is there adequate access to testing in the community health system for ill students and staff?
- Is there capacity in your local health department to investigate confirmed COVID-19 cases, quarantine their close contacts and assess whether transmission is occurring in the school?

Other considerations:

- Increasing trend in cases or hospitalizations
- Test positivity >5%
- Other health and education risks and benefits to children and their families

Consider low risk activities when all students have some level of in person learning.

- Are all staff trained on health and safety practices?

LOW <25 cases/100K/14 days

Encourage full-time in person learning for all elementary students and hybrid learning for middle and high school.

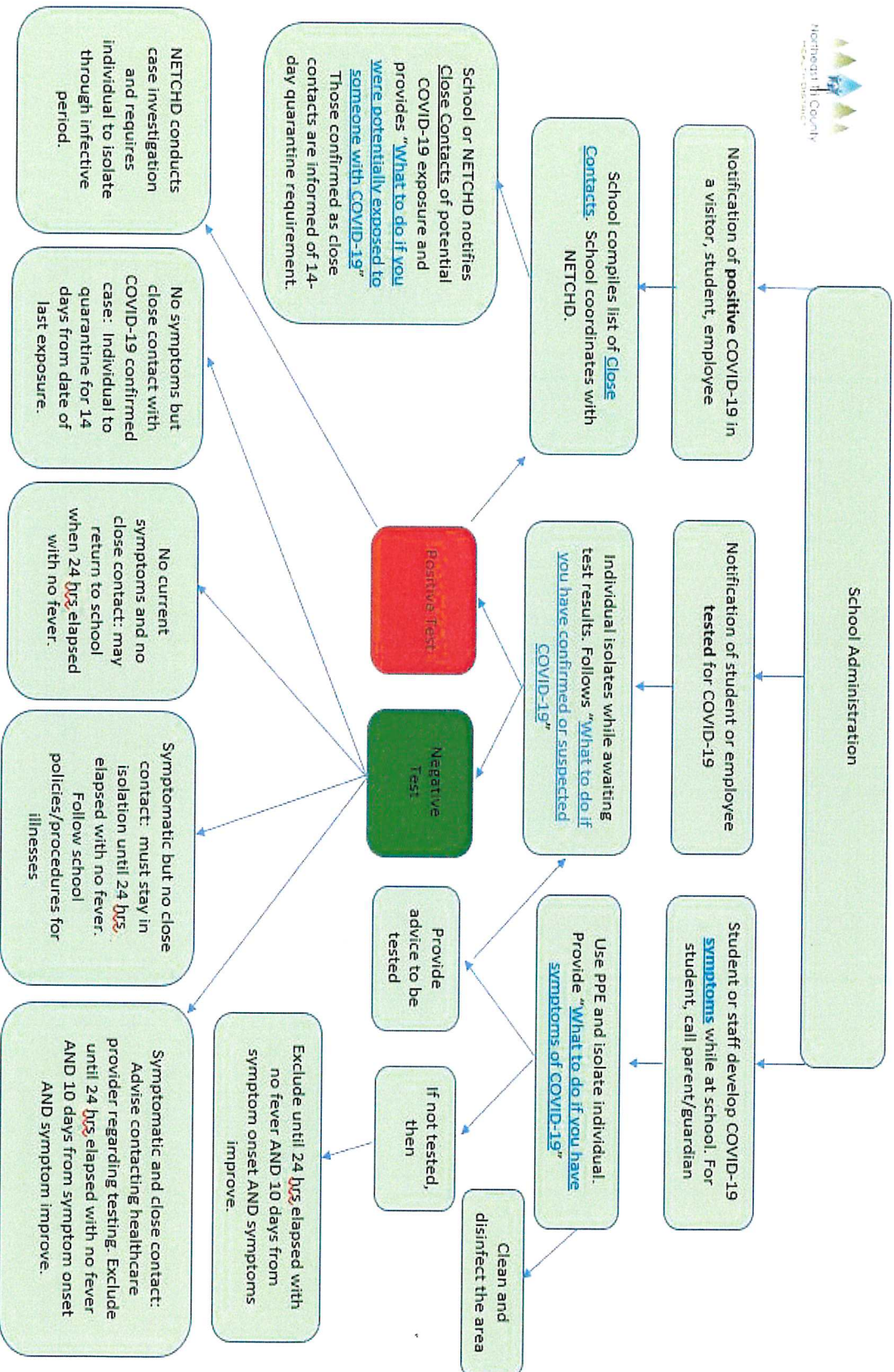
Consider low and moderate risk in person extra-curricular activities.

- Can local public health monitor the level of community spread to determine when a change in education modality is needed?

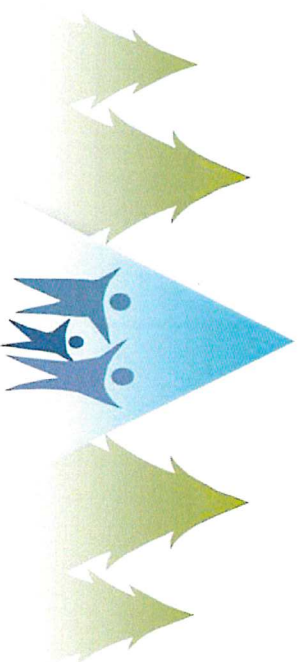
When all YES

Begin in Person Learning Model and Monitor

*Staff may work in school at any COVID-19 activity level if the school follows DOH and LMI health and safety guidance



Questions



Northeast Tri County
HEALTH DISTRICT